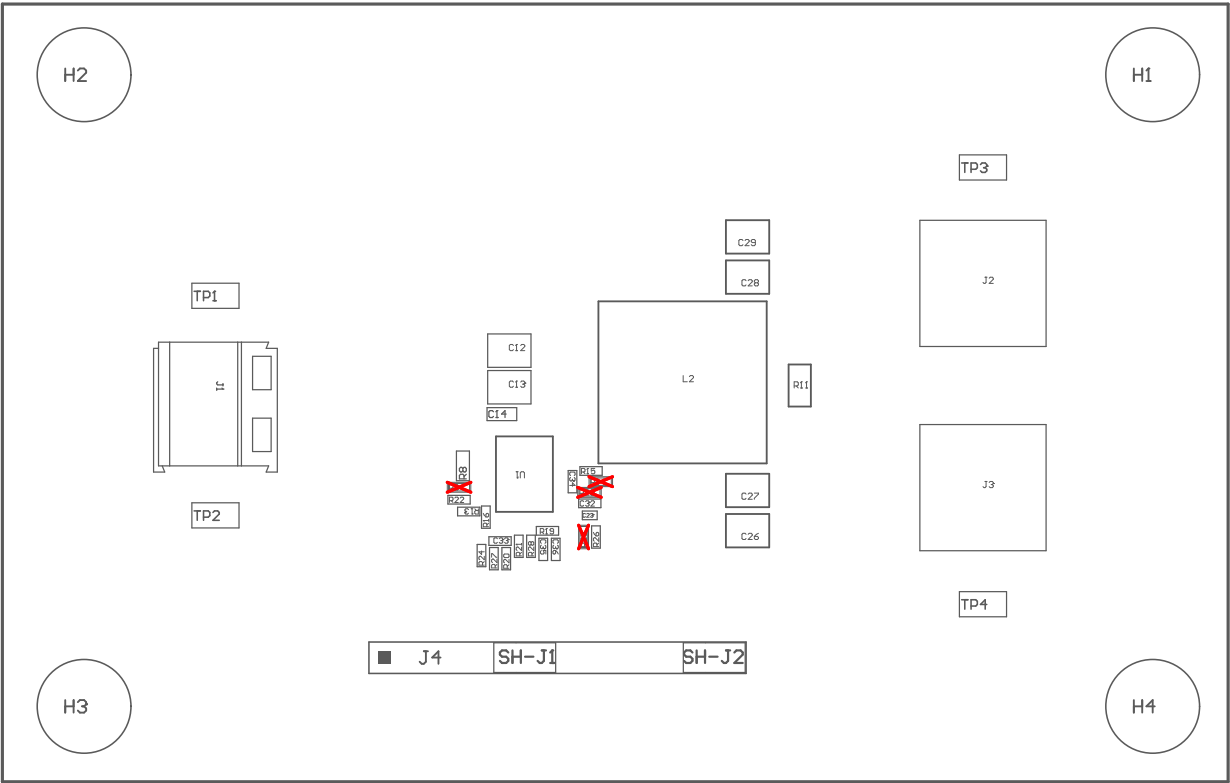


- Z21 ■Install label in silkscreened box after final wash. Text shall be 8 pt font. Text shall be per the Label Table in the PDF schematic.
- Z22 ■These assemblies are ESD sensitive, ESD precautions shall be observed.
- Z23 ■These assemblies must be clean and free from flux and all contaminants. Use of no clean flux is not acceptable.
- Z24 ■These assemblies must comply with workmanship standards IPC-A-610 Class 2, unless otherwise specified.
- Z25 ■Install Shunt Jumper SH-J1 onto J4 Pins 5-6
- Z26 ■Install Shunt Jumper SH-J2 onto J4 Pins 11-12



COMPONENTS MARKED 'DNP' SHOULD NOT BE POPULATED.
ASSEMBLY VARIANT: 003

PCB VIEWED FROM TOP SIDE	BOARD #: SR148	REV: B	SVN REV: Not in version control
	TID #: N/A		
PLOT NAME = Top Assembly Drawing	GENERATED : 10/14/2025 12:32:08 PM	TEXAS INSTRUMENTS	

